

# New Items

## FEBRUARY 2024



### Next Day Pac Gourmet\*

\* Orders must be placed by 2PM the day before.

View the full list here!



**Bordelaise Jus**  
#3858 1/500 mL



**Lychee Puree, Frozen**  
#3752 1/2.2 Lb



**VALRHONA**  
**62% Dark Satilia Chocolate**  
#3035 1/26.5 Lb



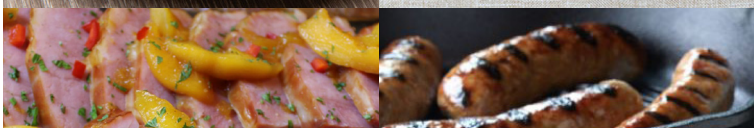
**TCHO**  
**70% Real Fudgy Dark Chocolate**  
#3090 1/3 Kg



**NUTLEY FARMS**  
**Hazelnut Flour**  
#3688 1/5 Lb



**cuisine-tech**  
**Locust Bean Gum**  
#3226 1/16 Oz



- #318040 **Sausage Bulk RTC** 1/10 Lb
- #318041 **Sausage Link 1.75 Oz Collagen Casing Precooked** 1/10 Lb
- #318044 **Sausage Patty 2 Oz Precooked RTH** 1/10 Lb
- #318047 **Sausage Patty 1.5 Oz Precooked RTH** 1/10 Lb
- #319282 **Bacon 18/22 Layout Prop 12 Compliant** 1/15 Lb
- #319357 **Ham Pit Style W/A B/L** 2/14# Avg
- #319542 **Ham Flat Boneless W/A** 2/12# Avg



- McCORMICK FOR CHEFS**
- Tabletop Grinder | 6/6 Pack**
- #285604 **Sea Salt 2 Oz**
- #285605 **Black Peppercorn 1.2 Oz**

CHECK OUT THE TABLETOP CADDY REBATE



- Mi Rancho**
- 6" Tortillas | 12/20 Ct**
- #195365 **White Corn Estilo a Mano**
- #195366 **Flour Especial Fresh**



**GEORGES**  
**Fresh Chicken Leg Quarter, Bulk**  
#402365 4/10 Lb



**WHOLLY**  
**Fresh Hand-Scooped Avocado**  
#190240 8/2 Lb

TO ORDER, PLEASE CONTACT YOUR BIRITE SALES REPRESENTATIVE  
123 SOUTH HILL DRIVE, BRISBANE, CA 94005 | TEL: (415) 656 - 0187 | WWW.BIRITE.COM

Follow Us!  

 @BIRITEFSD